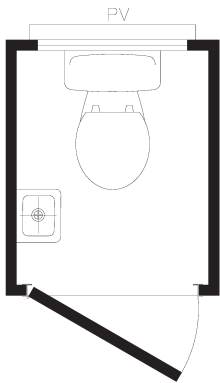
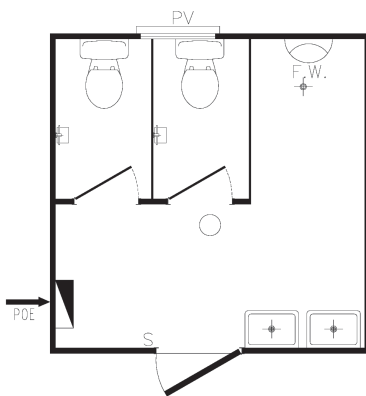


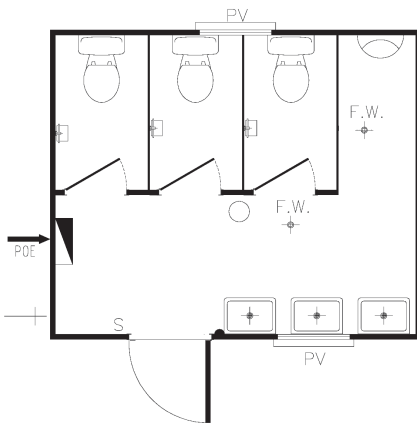
**T-001** 1.2 x 1.0m



**T-002** 3.0 x 3.0m



**T-003** 3.6 x 3.0m



Please contact **AMS** if you would like more information about our Mining, Resources and Construction Building Range.



**AMS** specialise in the use of a number of products and construction techniques for the mining and resource sectors e.g. Concrete or steel floors, steel, panel and/or composite wall systems. We can provide all necessary designs, manufacture, transport and installation services to meet your industry or remote area construction requirements.

Floor plans and elevations are for illustration purposes only.

ABN 28 106 655 458 Builder Reg No: 12568

AUSSIE MODULAR SOLUTIONS

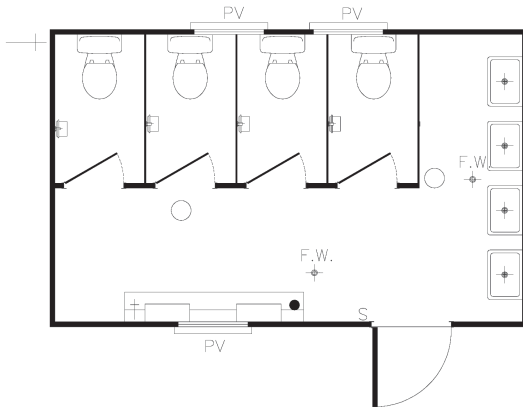
T +61 8 9356 1086

F +61 8 9358 5481

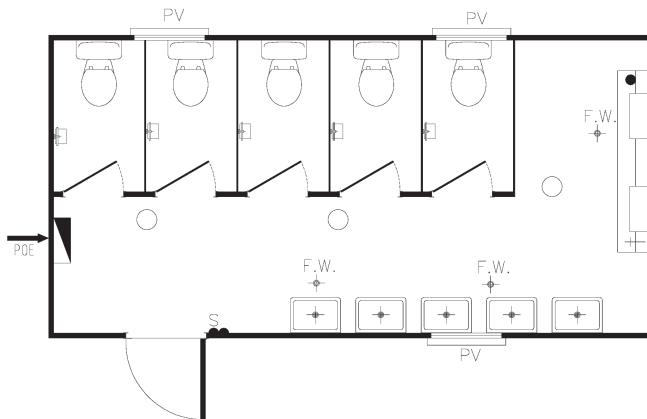
sales@ams-group.com.au

www.ams-group.com.au

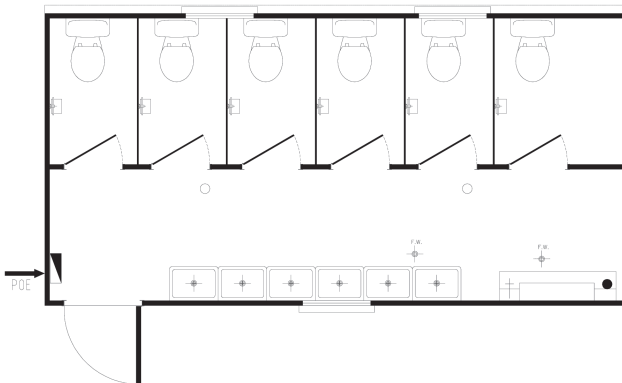
**T-004** 4.8 x 3.0m



**T-005** 6.0 x 3.0m



**T-006** 6.0 x 3.0m



Please contact  
**AMS** if you would  
like more information  
about our Mining,  
Resources and  
Construction  
Building Range.



**AMS** specialise in the use of a number of products and construction techniques for the mining and resource sectors e.g. Concrete or steel floors, steel, panel and/or composite wall systems. We can provide all necessary designs, manufacture, transport and installation services to meet your industry or remote area construction requirements.

Floor plans and elevations are for illustration purposes only.

ABN 28 106 655 458 Builder Reg No: 12568

AUSSIE MODULAR SOLUTIONS

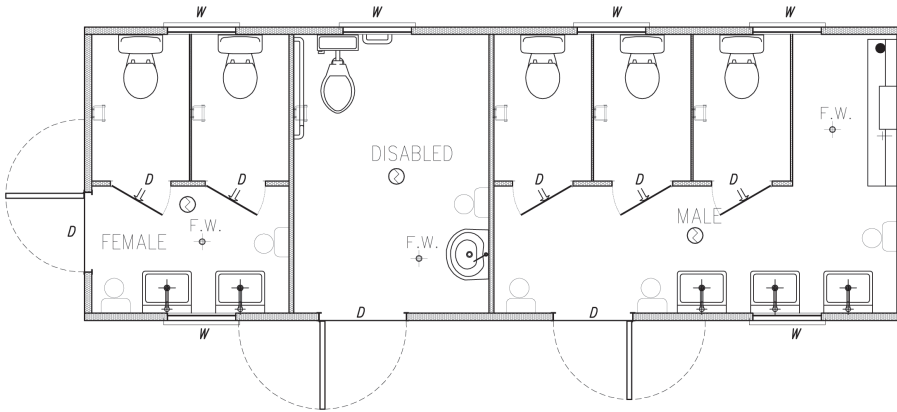
T +61 8 9356 1086

F +61 8 9358 5481

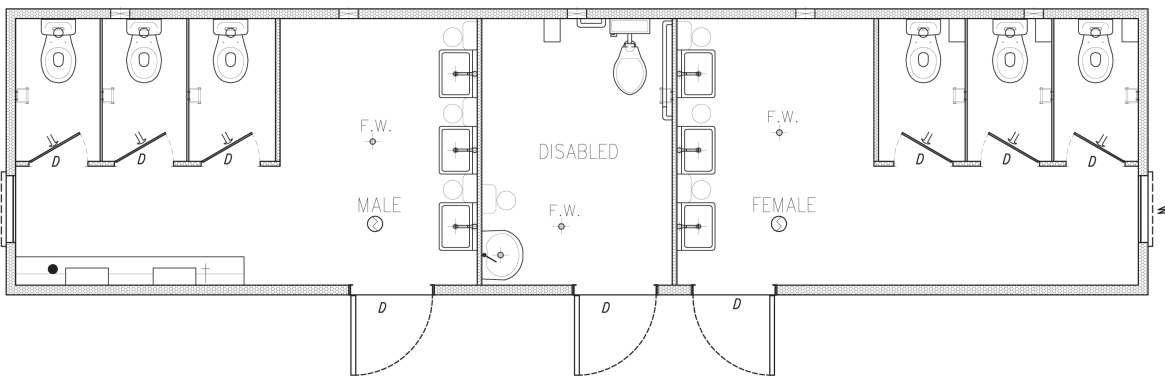
sales@ams-group.com.au

www.ams-group.com.au

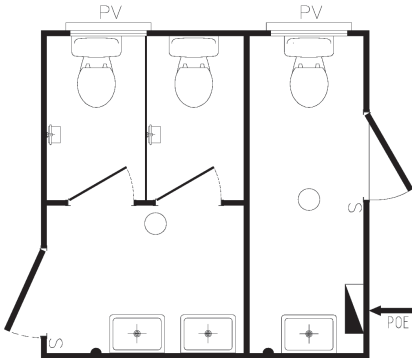
**MFD-007** 8.4 x 3.0m



**MFD-008** 12.0 x 3.0m



**TMF-001** 3.0 x 3.0m



Please contact **AMS** if you would like more information about our Mining, Resources and Construction Building Range.



**AMS** specialise in the use of a number of products and construction techniques for the mining and resource sectors e.g. Concrete or steel floors, steel, panel and/or composite wall systems. We can provide all necessary designs, manufacture, transport and installation services to meet your industry or remote area construction requirements.

Floor plans and elevations are for illustration purposes only.

ABN 28 106 655 458 Builder Reg No: 12568

AUSSIE MODULAR SOLUTIONS

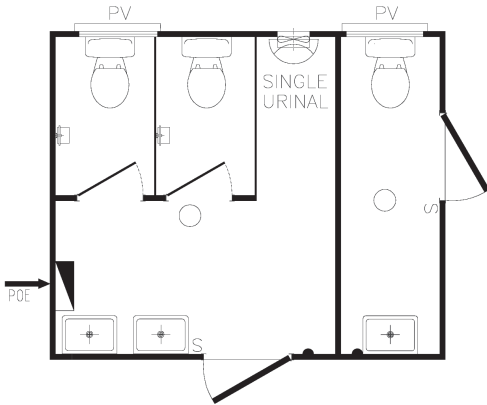
T +61 8 9356 1086

F +61 8 9358 5481

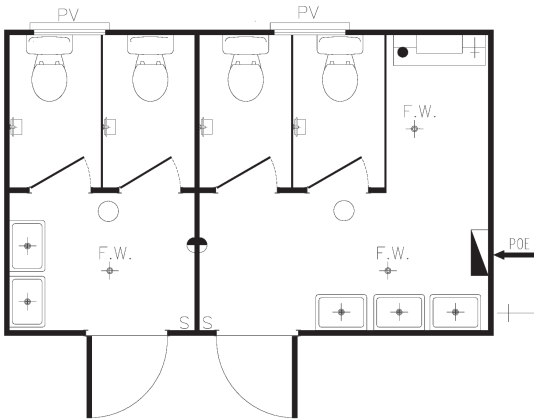
sales@ams-group.com.au

www.ams-group.com.au

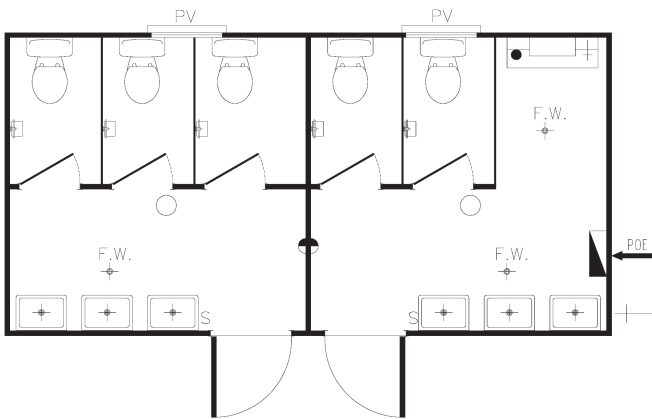
**TMF-002** 3.6 x 3.0m



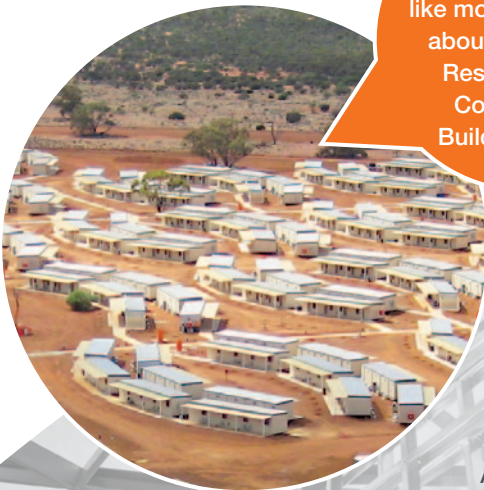
**TMF-003** 4.8 x 3.0m



**TMF-004** 6.0 x 3.0m



Please contact **AMS** if you would like more information about our Mining, Resources and Construction Building Range.



**AMS** specialise in the use of a number of products and construction techniques for the mining and resource sectors e.g. Concrete or steel floors, steel, panel and/or composite wall systems. We can provide all necessary designs, manufacture, transport and installation services to meet your industry or remote area construction requirements.

Floor plans and elevations are for illustration purposes only.

ABN 28 106 655 458 Builder Reg No: 12568

AUSSIE MODULAR SOLUTIONS

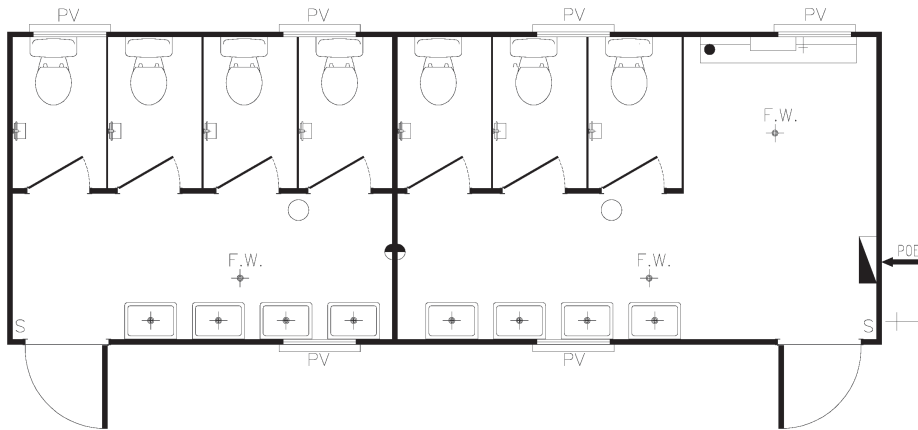
T +61 8 9356 1086

F +61 8 9358 5481

sales@ams-group.com.au

www.ams-group.com.au

TMF-005 8.4 x 3.0m



Please contact **AMS** if you would like more information about our Mining, Resources and Construction Building Range.



**AMS** specialise in the use of a number of products and construction techniques for the mining and resource sectors e.g. Concrete or steel floors, steel, panel and/or composite wall systems. We can provide all necessary designs, manufacture, transport and installation services to meet your industry or remote area construction requirements.

Floor plans and elevations are for illustration purposes only.

ABN 28 106 655 458 Builder Reg No: 12568

AUSSIE MODULAR SOLUTIONS

T +61 8 9356 1086

F +61 8 9358 5481

sales@ams-group.com.au

www.ams-group.com.au